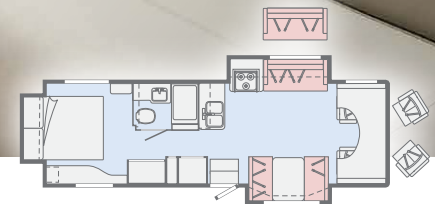




**MINNIE WINNIE**

**WINNEBAGO**



Ready to go  
anywhere  
adventure  
calls you

Choose your adventure, but first, choose your floorplan. The Winnebago® Minnie Winnie® gives you seven floorplan options, including the new 22M, which includes a U-shaped dinette that converts to a comfortable bed. Each floorplan features a private rear bedroom and cabover bunk for added sleeping flexibility, plus a large rear

trunk for your gear. Make it your own with three new interior décor options and stylish exteriors. Add in a long list of standard features, a variety of available upgrade packages, and Winnebago's legendary build quality, and you'll see why the Minnie Winnie is an outstanding value for families of all sizes.

This brochure features the  
**Minnie Winnie 31D Floorplan**

Cascade with Coffee-Glazed Vienna Maple Cabinetry



Dinette



Dinette Storage



Dinette as Bed



The Minnie Winnie is designed for relaxed and comfortable living with four interior décor collections that include Primera® by Ultrafabrics seat covers for added comfort and durability. The U-shaped dinette (22M, 22R, 26A, 31K) is perfect for game nights, while standard dinette models (25B, 31D, 31G) feature a nearby sofa bed for relaxing once mealtime is over. Available swivel cab seats (26A, 31D, 31K) provide additional seating flexibility, ideal when you're taking in a movie on the HDTV with a DVD player.

Available TrueComfort+ Sofa



Available TrueComfort+ Sofa as Bed



Overhead Bed



HDTV



Overhead Bed Curtain



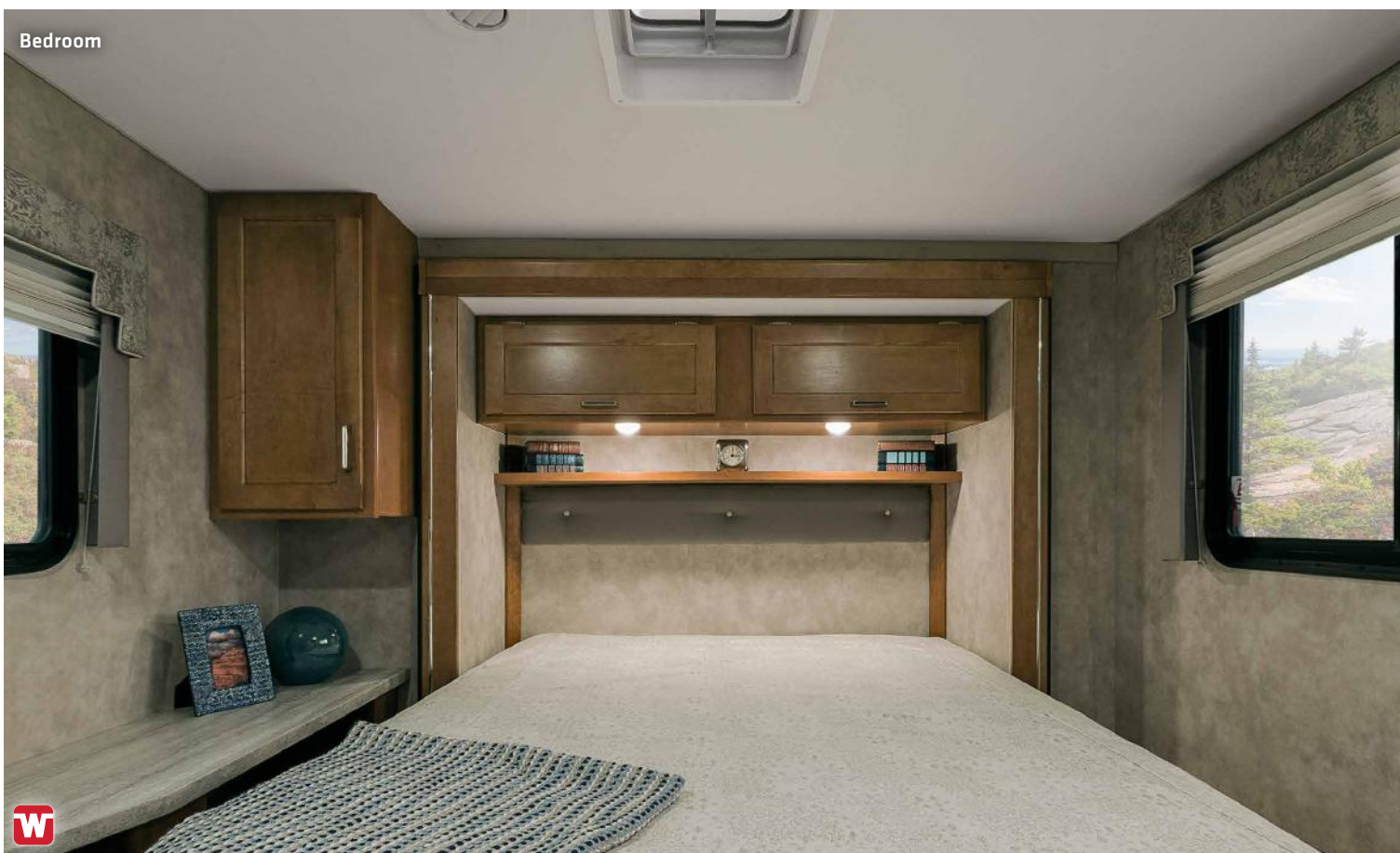
Overhead Bed Ladder



Cooking in the Minnie Winnie is a delight, thanks to the 3-burner range with a recessed oven and glass cover (NA 22R), microwave, 2-door refrigerator/freezer, and double-bowl sink (NA 22R). Serious chefs might consider optional upgrades like a microwave/convection oven (26A, 31D, 31G, 31K), 4-door refrigerator/freezer with an icemaker (31K), and a large double-door refrigerator/freezer (26A, 31D, 31G, 31K). Or take it further upscale with the Premium Package (26A, 31D, 31G, 31K), which includes a Corian® countertop, stainless steel undermount sink, and Corian sink covers.



A good night's sleep makes every trip better, and the Minnie Winnie maximizes sleep comfort with a multi-layer, foam double (22R, 25B) or queen bed in the rear bedroom. Every floorplan also features an overhead bed above the cab, plus a dinette and/or sofa bed that quickly converts to a cozy bed. On the 31G, bunk beds add to the sleeping capacity and fun. Before calling it a night, freshen up in the Minnie Winnie's roomy shower with a flexible shower head.



Dash



The Minnie Winnie cab is designed to put you in complete command. Multi-adjustable cab seats with armrests and lumbar support let you dial in comfort, while the power steering with tilt and cruise control ease driving duties. Backing up is a breeze with the available exterior mirrors with defrost and the Radio/Rearview Monitoring System.

Expand your relaxation by upgrading to the swivel cab seats (26A, 31D, 31K) that can pivot to face the lounge once you are parked at your favorite campgrounds.

Mirror



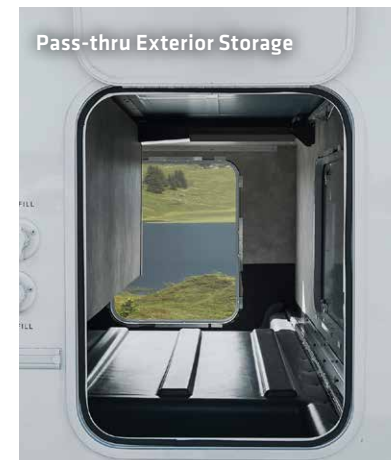
Radio/Rearview Monitor System

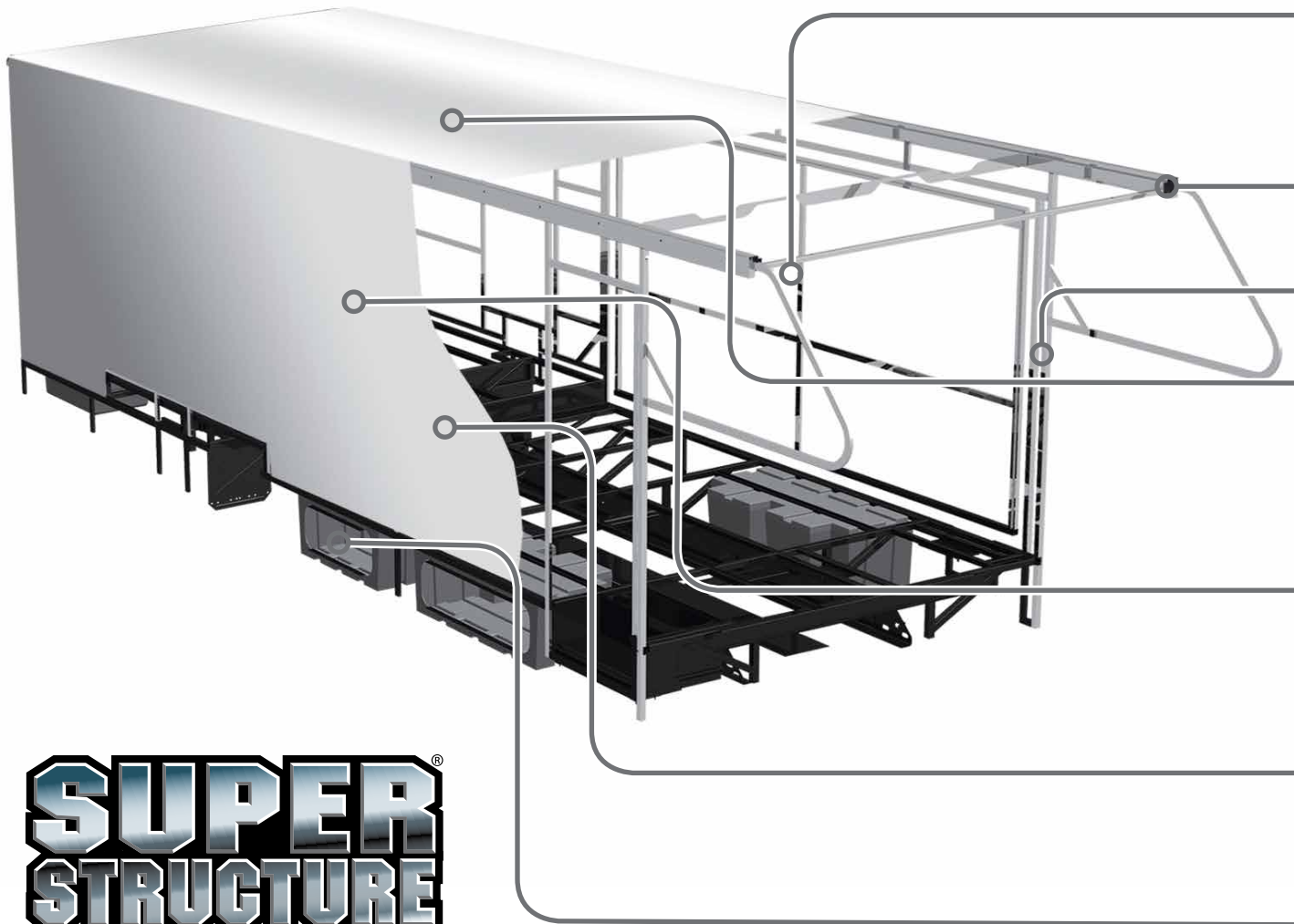


Available Powered Patio Awning



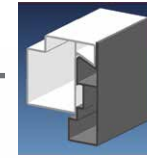
Two standard and one deluxe graphics packages help the Minnie Winnie's premium high-gloss fiberglass exterior shine on the road and in camp. Standard equipment includes a 4,000-watt Cummins Onan® generator, patio awning, porch light, running boards, and a large lighted trunk storage compartment. Take the fun outside with a powered patio awning with LED lighting. On the 31D, an Exterior Entertainment Center with an HDTV, DVD player, AM/FM radio, and speakers is available.



**SUPER  
STRUCTURE**

BUILT TO LAST

From our smallest Class C coach to our largest diesel-pusher, coaches are built to Winnebago's legendary SuperStructure® construction design. It's a process developed and refined over more than 60 years of building some of the strongest, most durable coaches in the industry.



**Interlocking Joints** Specially engineered interlocking joints connect the floor, sidewalls, and roof where competitors often rely on simple screws to bear the weight.



**Laser-Cut Tubing** Precision laser cutters create precise joints in structural steel that are stronger and require less welding.

**Solid Framework** Structural extruded aluminum creates an extremely strong and solid frame.

**Fiberglass Roof** The one-piece fiberglass roof is backed by a 10-year limited parts-and-labor roof skin warranty.

**Thermo-Panel® Sidewalls** By layering fiberglass and high-density block foam insulation with welded aluminum support structures, we create some of the industry's strongest, most durable, and lightweight sidewalls.

**Embedded Steel** Metal substructures embedded into the sidewall provide solid attachment points to keep cabinets and appliances mounted securely in place.

**E-coating** An electrodeposition coating helps protect critical steel components.

# Minnie Winnie

**TESTING** Before rolling out of our factories, every coach undergoes an extensive 113-point inspection. Each coach also passes a high-pressure water test that simulates rain at a rate of 50-inches per hour to check for leaks. During the design process, our computer simulations, physical testing center, and rigorous test track ensure each model is built to last.



Visit [BetterBuiltRVs.com](http://BetterBuiltRVs.com) to gain real insight into what goes into a Winnebago motorhome.

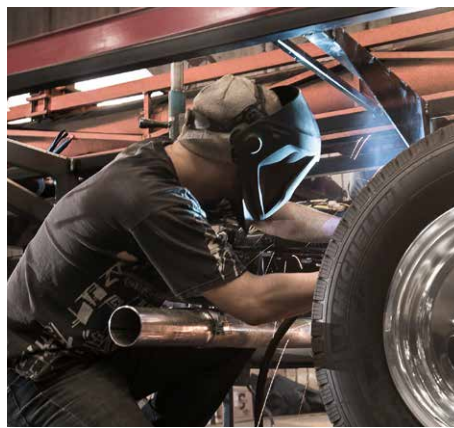
# SuperStructure

**DETAILS** At Winnebago, we treat the features you can't see with the same care as the ones you can. Look in the access panels of some of our competitors' coaches and you'll see loose insulation and wires haphazardly strewn about. Winnebago maintains a clean fit and finish throughout so your coach will last for the long haul.



# BUILT IN-HOUSE

We process and finish key aluminum parts. We rotocast our own plastic components. In fact, we manufacture most of our own parts so they are designed to fit the space, rather than fitting the space to an awkward off-the-shelf component size.



**SUPER  
STRUCTURE**  
BUILT TO LAST

# WINNEBAGO

# TAKE A TOUR

We're proud of our processes, state-of-the-art facilities, and the people who make Winnebago number one. We invite you to visit our complex in Forest City, Iowa, for a firsthand look at the dedication and technology behind every motorhome we build.



Call (641) 585-6936 or (800) 643-4892  
or visit us online at  
[WinnebagoInd.com/company/visit](http://WinnebagoInd.com/company/visit)  
for more information.

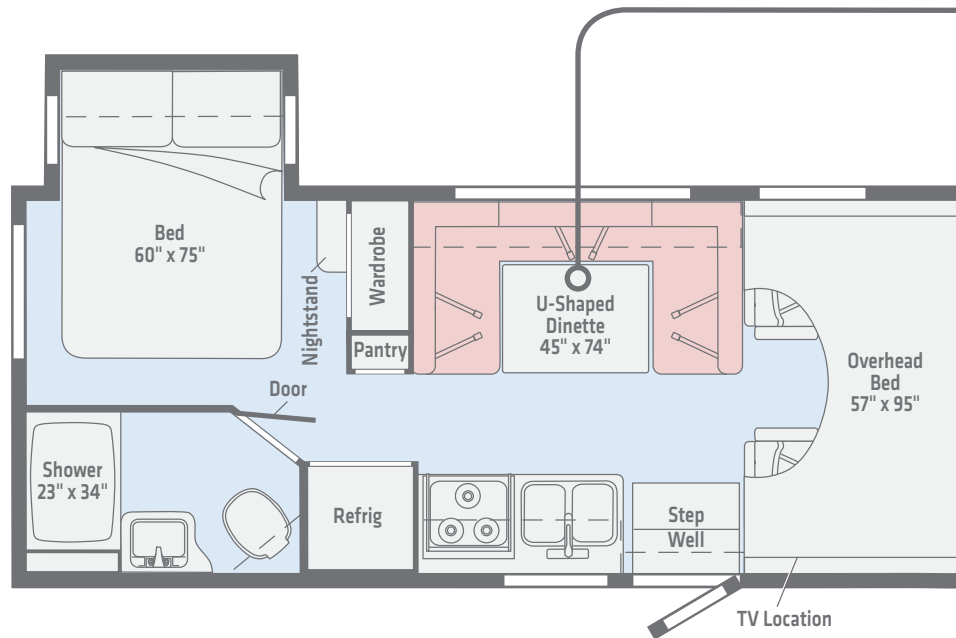
# Minnie Winnie

## NEW 22M

## Floorplans



The slideout provides added room to the rear master suite, while the U-shaped dinette quickly converts to a comfortable bed for added sleeping capacity.



**Length** 24'2"  
**Ext. Storage** (cu. ft.) 44.5  
**Seating** 5

*Dimensions shown are for sleeping and shower space only and may vary due to styling differences. Dashed lines denote overhead storage areas. Floorplans and specifications are also available online at [WinnebagoInd.com](http://WinnebagoInd.com).*

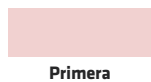
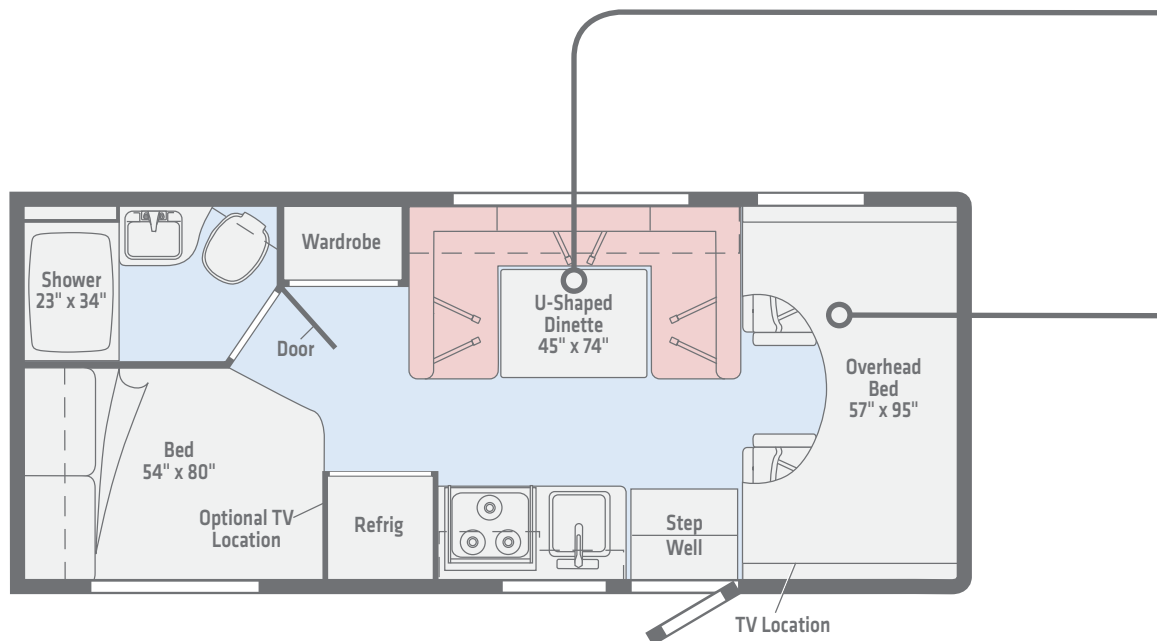
# Minnie Winnie

## 22R

## Floorplans



Located opposite the galley, the U-shaped dinette highlights this floorplan, and brings extra coziness to family dinners and game nights.

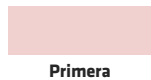
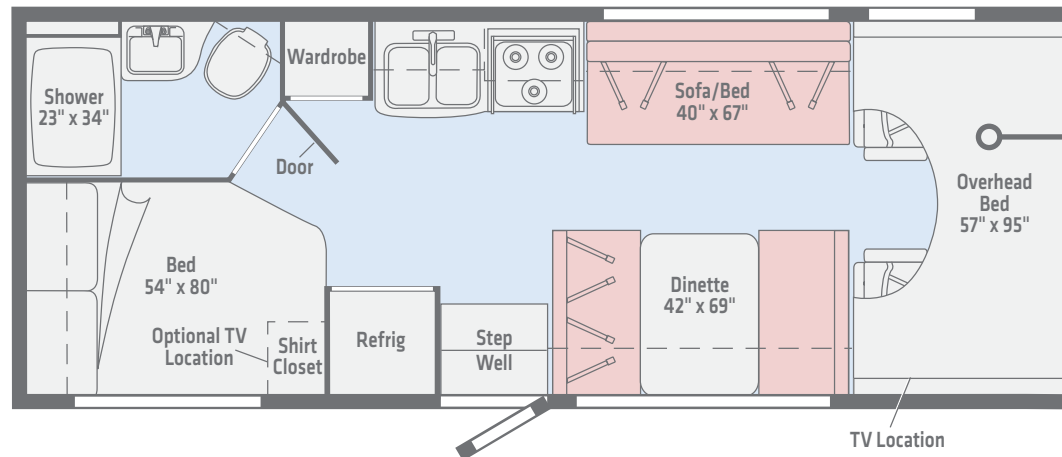


**Length** 23'10"  
**Ext. Storage** (cu. ft.) 60.4  
**Seating** 5

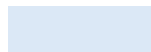
*Dimensions shown are for sleeping and shower space only and may vary due to styling differences. Dashed lines denote overhead storage areas. Floorplans and specifications are also available online at [WinnebagoInd.com](http://WinnebagoInd.com).*

### 25B

Several people can enjoy all the comforts of home in a floorplan that lives much bigger than its compact size, thanks to the sofa/bed and overhead bed.



Primera

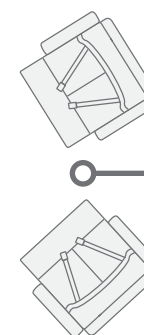
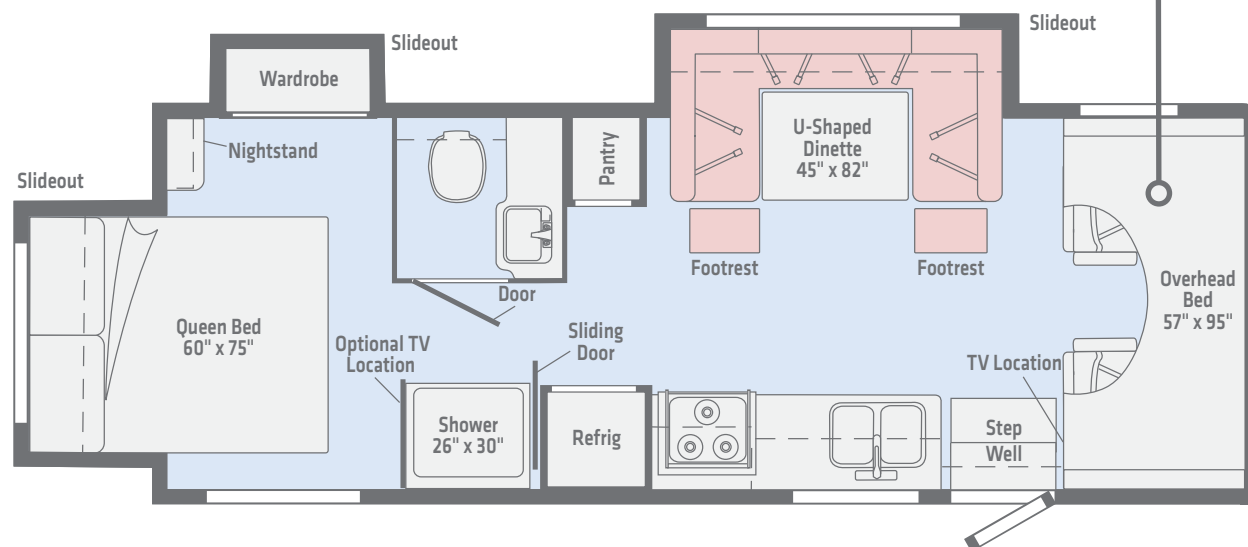


Vinyl

**Length** 26'2"  
**Ext. Storage** (cu. ft.) 73.1  
**Seating** 6

*Dimensions shown are for sleeping and shower space only and may vary due to styling differences. Dashed lines denote overhead storage areas. Floorplans and specifications are also available online at [WinnebagoInd.com](http://WinnebagoInd.com).*

The spacious, functional living area is matched by the large private master bedroom with walk-around queen bed, thanks to three slideouts and the versatile U-shaped dinette with footrests.



**Length** 27'1"  
**Ext. Storage** (cu. ft.) 45  
**Seating** 6

*Dimensions shown are for sleeping and shower space only and may vary due to styling differences. Dashed lines denote overhead storage areas. Floorplans and specifications are also available online at [WinnebagoInd.com](http://WinnebagoInd.com).*

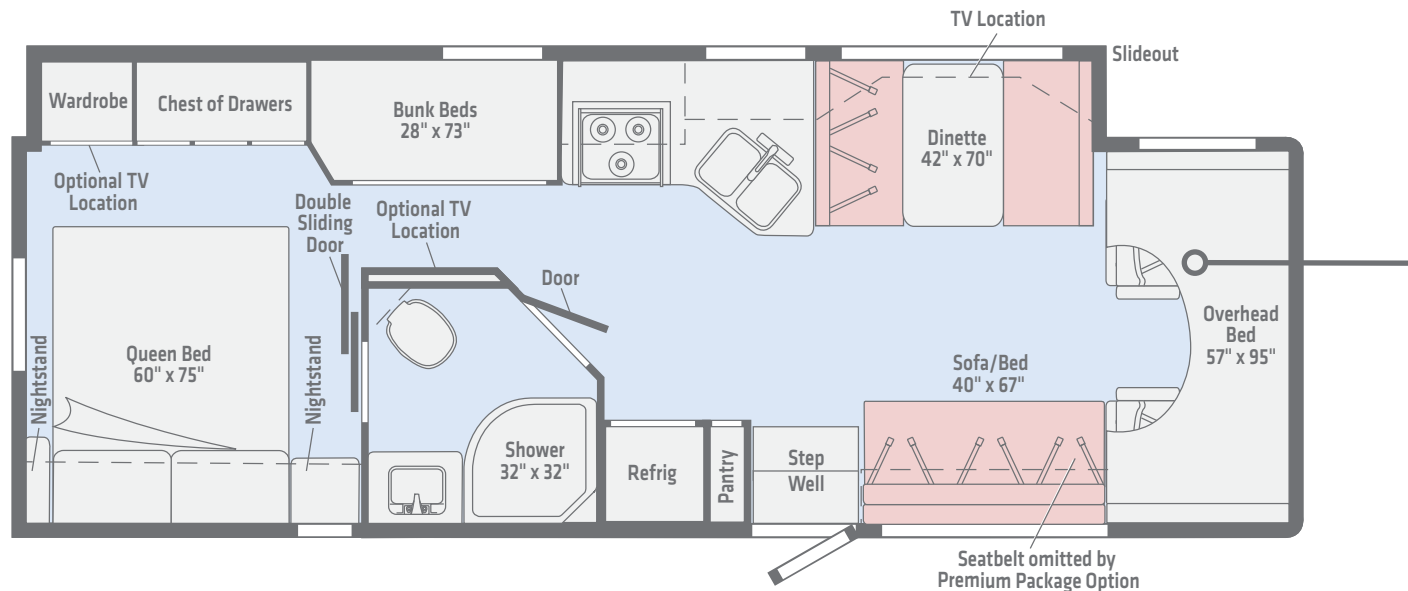
# Minnie Winnie

## 31G

## Floorplans



The full-wall slideout adds living space throughout the coach, while bunk beds and an available Exterior Tailgate Package make the 31G a big hit with growing families.

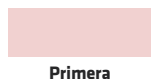
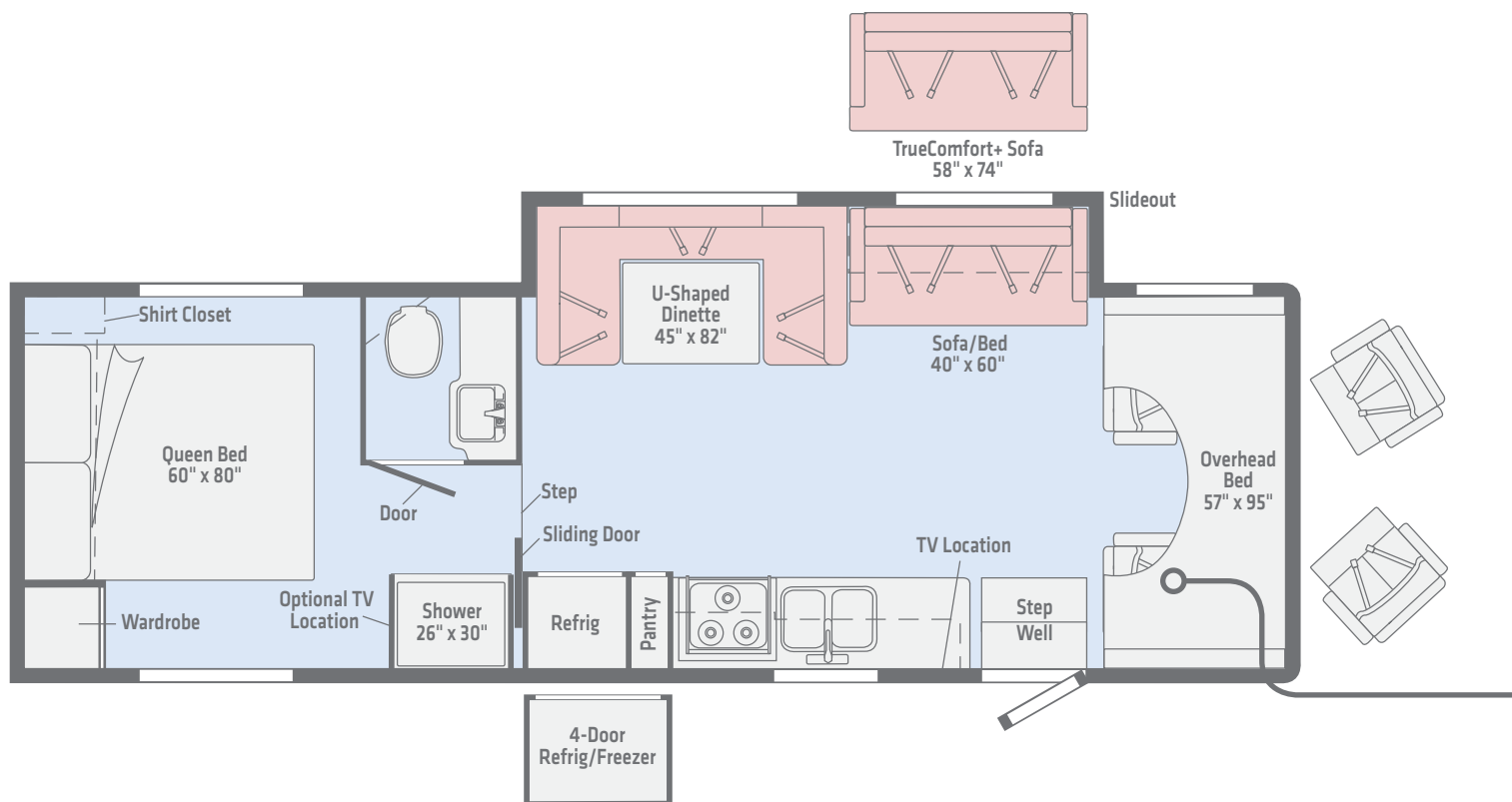


**Length** 32'9"  
**Ext. Storage** (cu. ft.) 80.7  
**Seating** 7 (6 with Premium Package)

*Dimensions shown are for sleeping and shower space only and may vary due to styling differences. Dashed lines denote overhead storage areas. Floorplans and specifications are also available online at [WinnebagoInd.com](http://WinnebagoInd.com).*

## 31K

A split bath sets off the roomy master bedroom, while a U-shaped dinette plus options like a 4-door refrigerator/freezer and TrueComfort+ Sofa make the 31K a perennial favorite.



**Length** 32'9"  
**Ext. Storage** (cu. ft.) 108.3  
**Seating** 7

*Dimensions shown are for sleeping and shower space only and may vary due to styling differences. Dashed lines denote overhead storage areas. Floorplans and specifications are also available online at [WinnebagoInd.com](http://WinnebagoInd.com).*

Available Front Cap



**Polar Tuscan Gold**  
STANDARD GRAPHICS

Available Front Cap



**Tuscan Gold**  
STANDARD GRAPHICS

Available Front Cap



**Bronze Mist**  
DELUXE GRAPHICS

Choose from four collections and three wood finishes.

Legend - Dealer Stock Only



Primera by Ultrafabrics



Primera Accent



Feature Fabric



Vinyl Flooring



Bedspread



Bed Cover



Corian Countertop



Laminate Countertop

Woods



Coffee-Glazed Vienna Maple



Honey Cherry

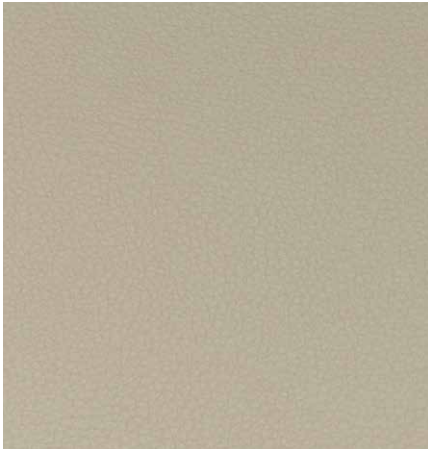


Glazed Driftwood

Winnebago® reserves the right to change décor materials and specifications without notice or obligation.

Choose from four collections and three wood finishes.

Inspire



Primera by Ultrafabrics



Primera Accent



Feature Fabric



Vinyl Flooring



Bedsread



Bed Cover



Corian Countertop



Laminate Countertop

Woods



Coffee-Glazed Vienna Maple



Honey Cherry



Glazed Driftwood  
*Dealer Stock Only*

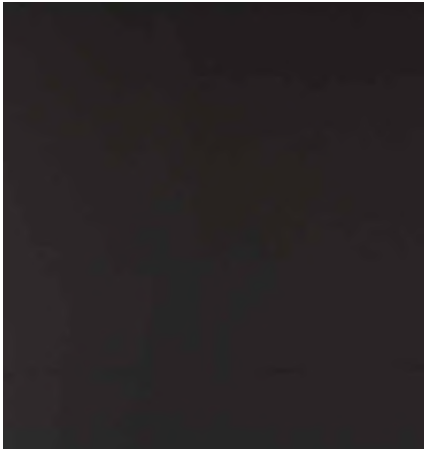
Winnebago® reserves the right to change décor materials and specifications without notice or obligation.

Choose from four collections and three wood finishes.

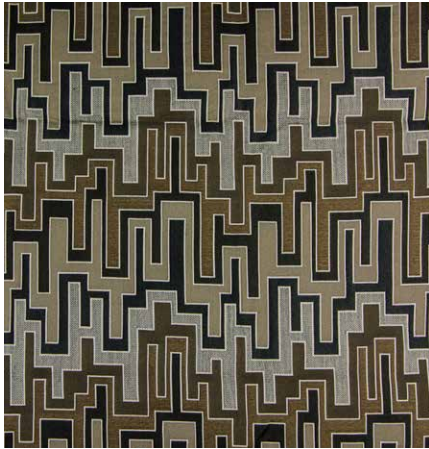
Pinnacle



Primera by Ultrafabrics



Primera Accent



Feature Fabric



Vinyl Flooring



Bedspread



Bed Cover



Corian Countertop



Laminate Countertop

Woods



Coffee-Glazed Vienna Maple



Honey Cherry

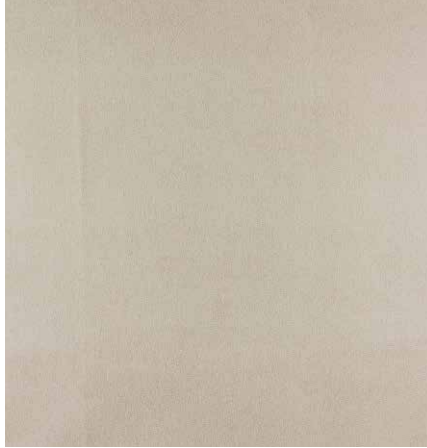


Glazed Driftwood  
*Dealer Stock Only*

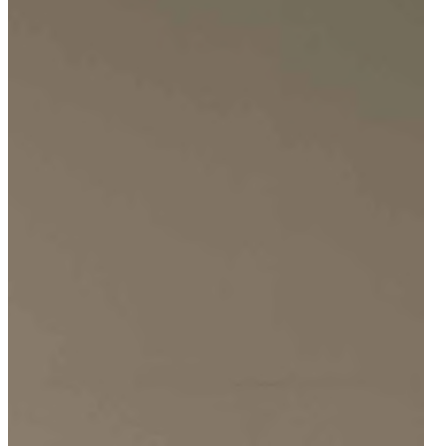
Winnebago® reserves the right to change décor materials and specifications without notice or obligation.

Choose from four collections and three wood finishes.

## Cascade - Dealer Stock Only



Primera by Ultrafabrics



Primera Accent



Feature Fabric



Vinyl Flooring



Bedsread



Bed Cover



Corian Countertop



Laminate Countertop

## Woods



Coffee-Glazed Vienna Maple



Honey Cherry



Glazed Driftwood

Winnebago® reserves the right to change décor materials and specifications without notice or obligation.

### The Holcombes

Peter, Kathy, and Abby have been full-time RVing since 2014. Using photos and videos shot by Peter, a professional photographer, the family has documented their many adventures around the continent including hiking, paddling, climbing, canyoneering, fishing, and more. All from the comfort of their Winnebago.

You can follow their journey at [WinnebagoLife.com](http://WinnebagoLife.com). You'll also find hundreds of other great stories from GoLife's outstanding contributors, along with how-to articles, gear reviews, RVing tips, and much more.



To learn more about the Holcombes' adventures, visit:

# GoLife

[WinnebagoLife.com/about](http://WinnebagoLife.com/about)



Weights & Measures	22M	22R	25B	26A	31D	31G	31K
Length	24'2"	23'10"	26'2"	27'1"	32'9"	32'9"	32'9"
Exterior Height <sup>1</sup>	11'	11'	11'	11'1"	11'1"	11'1"	11'1"
Exterior Width <sup>2</sup>	8'5.5"	8'5.5"	8'5.5"	8'5.5"	8'5.5"	8'5.5"	8'5.5"
Exterior Storage <sup>3</sup> (cu. ft.)	44.5	60.4	73.1	45	95	80.7	108.3
Awning Length	14'	14'	17'	18'	17'	19'	20'
Interior Height	6'10"/6'5.5"***	6'10"	6'10"	6'10"/6'5.5"***	6'10"/6'5.5"***	6'10"/6'5.5"***	6'10"/6'5.5"***
Interior Width	8'	8'	8'	8'	8'	8'	8'
Freshwater Tank Capacity <sup>4</sup> (gal.)	40	40	40	40	44	44	44
Water Heater Capacity (gal.)	6	6	6	6	6	6	6
Holding Tank Capacity - Black/Gray <sup>4</sup> (gal.)	40/45	21/24	21/26	35/39	37/30	37/57	30/30
LP Capacity <sup>5</sup> (gal.)	18	18	18	18	18	18	18
Fuel Capacity (gal.)	55	55	55	55	55	55	55
GCWR <sup>6</sup> (lbs.)	18,500 <sup>A</sup> /22,000 <sup>B</sup>	18,500 <sup>A</sup> /22,000 <sup>B</sup>	18,500 <sup>A</sup> /22,000 <sup>B</sup>	22,000 <sup>B</sup>	22,000 <sup>B</sup>	22,000 <sup>B</sup>	22,000 <sup>B</sup>
GVWR (lbs.)	11,500 <sup>A</sup> /14,500 <sup>B</sup>	11,500 <sup>A</sup> /14,500 <sup>B</sup>	11,500 <sup>A</sup> /14,500 <sup>B</sup>	14,500 <sup>B</sup>	14,500 <sup>B</sup>	14,500 <sup>B</sup>	14,500 <sup>B</sup>
GAWR - Front (lbs.)	4,600 <sup>A</sup> /5,000 <sup>B</sup>	4,600 <sup>A</sup> /5,000 <sup>B</sup>	4,600 <sup>A</sup> /5,000 <sup>B</sup>	5,000 <sup>B</sup>	5,000 <sup>B</sup>	5,000 <sup>B</sup>	5,000 <sup>B</sup>
GAWR - Rear (lbs.)	7,800 <sup>A</sup> /9,600 <sup>B</sup>	7,800 <sup>A</sup> /9,600 <sup>B</sup>	7,800 <sup>A</sup> /9,600 <sup>B</sup>	9,600 <sup>B</sup>	9,600 <sup>B</sup>	9,600 <sup>B</sup>	9,600 <sup>B</sup>
Wheelbase	158"	158"	182"	190"	220"	220"	220"
Seating Capacity	5	5	6	6	7	6*/7	7

\*Included with Premium Package \*\*Rear of Coach <sup>A</sup> Ford E350 Chassis <sup>B</sup> Ford E450 Chassis

## Optional Package Upgrades

**Convenience Package** front bunk ladder, bunk privacy curtain, additional deep-cycle, Group 24 battery, glass shower door (NA 31G), rear ladder, Radio/Rearview Monitor System (DVD receiver with 6.2" LCD color touch screen, Bluetooth®, Siri Eyes Free, SiriusXM® ready, Spotify®, AppRadio One, rear color camera), stainless steel wheel liners and valve extenders, black tank flushing system, TrueLevel™ monitoring system, full mosaic tile backsplash, recessed range w/conventional burners and folding glass cover (NA 22R)

**Premium Package** (26A, 31D, 31G, 31K) Corian® countertop, galley w/stainless steel undermount sink and Corian sink cover, Primera cab seat covers, 40" HDTV upgrade (31K), headboard upgrade (NA 26A), Dream Dinette™ table mechanism (31D, 31G), bedspread (NA 26A), recessed range w/sealed covers and a

glass bifold cover, pillow shams and fillers, power ventilator w/rain cover, electric lift, remote, exhaust airflow, DSI gas/electric water heater, dash appliqué, MCD solar/blackout roller shades (MCD blackout roller shades in bedroom), porcelain toilet w/sprayer, stainless steel bathroom sink, single-control faucets, window treatment upgrade, sofa pillows (NA 26A), frosted mirror refrigerator inserts, frosted mirror overhead door inserts, automatic generator change over switch

**Exterior Tailgate Package** (31G) 32" HDTV, stereo w/remote, AM/FM radio, DVD player w/remote, two exterior speakers, radio antenna, exterior wash station w/lighted pump switch, coiled water hose, quick-disconnect and sprayer head, refrigerator (2.6 cu. ft.), cabinet, LP QuickConnect, 110 V/AC receptacle

## Chassis

**Ford® E350 Chassis** 305-hp 6.8L SEFI Triton V10 engine, TorqShift 6-speed automatic transmission w/overdrive, 155-amp. alternator (22M, 22R, 25B)

**Ford E450 Chassis** 305-hp 6.8L SEFI Triton V10 engine, TorqShift 6-speed automatic transmission w/overdrive, 155-amp. alternator (26A, 31D, 31G, 31K)

### 4-wheel ABS

**Rear auxiliary springs** (31G)

**Trailer hitch**<sup>6</sup> 7,500-lb. drawbar/500-lb. maximum vertical tongue weight (NA 31D, 31G), 350-lb. maximum vertical tongue weight (31D, 31G)

## OPTIONAL EQUIPMENT

**Ford E450 Chassis** 305-hp 6.8L SEFI Triton V10 engine, TorqShift 6-speed automatic transmission w/overdrive, 155-amp. alternator (22M, 22R, 25B)

**Rear auxiliary springs** (26A, 31D, 31K)

**Hydraulic leveling jacks** (front and rear) (31D, 31G, 31K)

**Electric stabilizing jacks** (22M, 22R, 26A) (25B w/E450 Chassis)

**Spare tire** (NA 25B w/E350 Chassis)

## Cab Conveniences

**Cab seats** armrests, fixed lumbar support, and multi-adjustable slide/recline

### 3-point seat belts

**Airbags driver and passenger**

### 12-volt powerpoint

**Power steering** w/tilt and cruise control

### Power door locks

### Sunvisors

**Manual mirrors** w/pivoting arms

### Cab mat

## OPTIONAL EQUIPMENT

**Swivel cab seat pedestal** (26A, 31D, 31K) (driver and passenger)

**Mirrors** w/defrost, remote and video camera

## Interior

**Amplified digital HDTV antenna**

**Pleated night shades** (lounge, dinette, and bedroom)



**Mini blinds** (galley, bath)

**Systems monitor panel**

**Roof vent** (bedroom and front bunk area)

**Blackout cab divider curtain** (22M, 22R, 25B, 31G)

**Front wraparound curtain** (26A, 31D, 31K)

**Tinted windows**

**Vinyl ceiling**

**USB charger** (dinette and bedroom)

**LED lighting**

**32" HDTV w/DVD player**

**Vinyl flooring throughout**

**Assist bar**

### OPTIONAL EQUIPMENT

**Dual-glazed, thermo-insulated windows** (NA 25B w/E350 Chassis)

**Sofa sleeper** (31D, 31K)



## Galley

**Microwave oven** w/touch control

**Vented range hood** w/light

**2-door refrigerator/freezer**

**Pantry** (NA 22R, 25B)

### OPTIONAL EQUIPMENT

**Microwave/convection oven** w/touch control (26A, 31D, 31G, 31K)

**4-door refrigerator/freezer** w/icemaker (31K)

**Large double-door refrigerator/freezer** w/woodgrain paneling (26A, 31D, 31G, 31K)

## Bath

**Shower** 23"x34" (22M, 22R, 25B)

**Shower** 26"x30" (26A, 31K)

**Shower** 26"x38" (31D)

**Shower** 32"x32" (31G)

**Shower door** (31G)

**Flexible showerhead**

**Skylight**

**Towel ring(s)**

**Powered roof vent**

**Toilet** w/foot pedal

**Tissue holder**

**Robe hook(s)**

**Towel bar(s)** (31D, 31G)

## Bedroom

**Double bed** w/2" foam mattress topper and mattress cover (22R, 25B)

**Queen bed** w/foam mattress and mattress cover (22M, 26A)

**Queen bed** w/foam mattress and bedspread (22M, 31D, 31G, 31K)

**Headboard** (NA 26A)

**Bunk beds** w/covered foam mattresses, mattress covers, storage compartment, and privacy curtains (31G)

### OPTIONAL EQUIPMENT

**24" HDTV**

**Bunk bed 24" HDTV** (31G)

## Exterior

**Premium high-gloss fiberglass skin**

**Porch light** w/interior switch



**Running boards**

**Large lighted trunk storage compartment**

**Patio awning**

### OPTIONAL EQUIPMENT

**Powered patio awning** w/LED lighting

**Molded front cap** (NA 25B w/E350 Chassis)

**Entertainment center** w/HDTV, DVD player, AM/FM radio, speakers (31D)

## Heating & Cooling

**20,000 BTU furnace** (22M, 22R, 25B)

**30,000 BTU furnace** (26A, 31D, 31G, 31K)

**Coleman®-Mach® 15 A/C**

## Electrical System

**AC/DC load center, 55-amp. converter/charger**

**30-amp. power cord**

**TV jack and AC receptacle near entrance door**

**Deep-cycle, Group 24 battery**

**Coach battery disconnect system**

**Automatic dual-battery charge control**

**4,000-watt Cummins Onan® Microquiet™ generator**

**Auxiliary start circuit**

### OPTIONAL EQUIPMENT

**AC/DC, 1,000-watt inverter** w/remote panel

## Plumbing System

**Pressurized city water hookup** w/tank fill

**On-demand water pump**

**6-gallon LP water heater** w/electronic ignition

**Permanent-mount LP tank** w/gauge

### OPTIONAL EQUIPMENT

**Heated drainage system**

## Safety

**LP, smoke, and carbon monoxide detectors**

**10 BC fire extinguisher**

**Ground fault interrupter**

**Child seat tether anchor**

## Warranty<sup>7</sup>

**12-month/15,000-mile basic limited warranty<sup>8</sup>**

**36-month/36,000-mile limited warranty on structure<sup>8</sup>**

**10-year limited parts-and-labor warranty on roof skin<sup>8</sup>**

### FOOTNOTES

1. The height of each model is measured to the top of the tallest standard feature and is based on the curb weight of a typically equipped unit. The actual height of your vehicle may vary by several inches depending on chassis or equipment variations. Please check with your dealer for further information.
2. Floorplans feature a wide-body design - over 96" In making your purchase decision, you should be aware that some states restrict access on some or all state roads to 96" in body width. Before making your purchase decision, you should confirm the road usage laws in the states of interest to you.
3. The load capacity of your motorhome is designated by weight, not by volume, so you cannot necessarily use all available space when loading your motorhome.
4. Capacities are based on measurements prior to tank installation. Slight capacity variations can result due to installation applications.
5. Capacities shown are tank manufacturer's listed water capacity (W.C.). Actual filled LP capacity is 80% of listing due to overfilling prevention device on tank.
6. Actual towing capacity is dependent on your particular loading and towing circumstances which includes the GVWR, GAWR, and GCWR as well as adequate trailer brakes. Please refer to the Operator's Manual of your vehicle for further towing information.
7. See separate chassis warranty.
8. See your dealer for complete warranty information.

NA Not Available

Not all items available in combination. See dealer for details.

Winnebago's® continuing program of product improvement makes specifications, equipment, model availability, and prices subject to change without notice. Published content reflects the most current product information at time of printing. Please consult your dealer for individual vehicle features and specifications.